



**India Meteorological Department  
(Ministry of Earth Sciences)**

**NATIONAL BULLETIN NO.: 05 (BOB/08/2024)**

**TIME OF ISSUE: 1530 HOURS IST**

**DATED: 21.12.2024**

**FROM: INDIA METEOROLOGICAL DEPARTMENT (FAX NO. 24643965/24699216/24623220)**

**TO: CONTROL ROOM, NDM, MINISTRY OF HOME AFFAIRS (FAX.NO. 23093750)**

**CONTROL ROOM NDMA (FAX.NO. 26701729)**

**CABINET SECRETARIAT (FAX.NO.23012284, 23018638)**

**PS TO HON'BLE MINISTER FOR S & T AND EARTH SCIENCES (FAX NO.23316745)**

**SECRETARY, MOES (FAX NO. 24629777)**

**H.Q. (INTEGRATED DEFENCE STAFF AND CDS) (FAX NO. 23005137/23005147)**

**DIRECTOR GENERAL, DOORDARSHAN (23385843)**

**DIRECTOR GENERAL, AIR (23421105, 23421219)**

**PIB MOES (FAX NO. 23389042)**

**UNI (FAX NO. 23355841)**

**D.G. NATIONAL DISASTER RESPONSE FORCE (NDRF) (FAX NO. 26105912, 2436 3260)**

**DIRECTOR, PUNCTUALITY, INDIAN RAILWAYS (FAX NO. 23388503)**

**CHIEF SECRETARY, ANDAMAN & NICOBAR ISLANDS (FAX NO. 03192-232656)**

**CHIEF SECRETARY, TAMIL NADU (FAX NO. 044-25672304)**

**CHIEF SECRETARY, PUDUCHERRY (FAX NO. 0413-2334145)**

**CHIEF SECRETARY, ANDHRA PRADESH (FAX NO. 0863-2441029)**

**CHIEF SECRETARY, ODISHA (FAX NO. 0674-2536660)**

**CHIEF SECRETARY, WEST BENGAL (FAX NO. 033-22144328)**

**Sub: Depression over westcentral Bay of Bengal**

The depression over westcentral Bay of Bengal moved east-northeastwards with the speed of 8 kmph during past 6 hours and lay centred at 1130 hrs IST of 21<sup>st</sup> December 2024 over the westcentral Bay of Bengal, near latitude 14.1°N and longitude 84.6°E, about 430 km south-southeast of Visakhapatnam (Andhra Pradesh), 490 km east-northeast of Chennai (Tamil Nadu) and 580 km south of Gopalpur (Odisha).

The system is likely to move slowly east-northeastwards maintaining its intensity as a depression for next 6 hours and weaken gradually thereafter over the Sea.

**Warnings:**

**(ii) Wind warning:**

Squally wind speed reaching 45-55 kmph gusting to 65 kmph is likely to prevail over westcentral and adjoining central parts of South Bay of Bengal till 22<sup>nd</sup> December and decrease gradually thereafter.

Squally wind speed reaching 35 to 45 kmph gusting to 55 kmph is likely to prevail along and off South Odisha-Andhra Pradesh-north Tamil Nadu coasts till 22<sup>nd</sup> December and decrease gradually thereafter.

**(iii) Sea Condition:**

Rough to very rough sea conditions are very likely to prevail over westcentral and adjoining central parts of South Bay of Bengal till 22<sup>nd</sup> December and improve gradually thereafter.

Rough sea conditions are very likely along & off South Odisha-Andhra Pradesh coast-north Tamil Nadu coasts till 22<sup>nd</sup> December and improve gradually thereafter.

**Spatial rainfall distribution: Isolated: <25%, A few: 26-50%, Many: 51-75%, Most: 76-100%**

**Rainfall amount (mm): Heavy rain: 64.5 – 115.5, Very heavy rain: 115.6 – 204.4, Extremely heavy rain: 204.5 or more.**

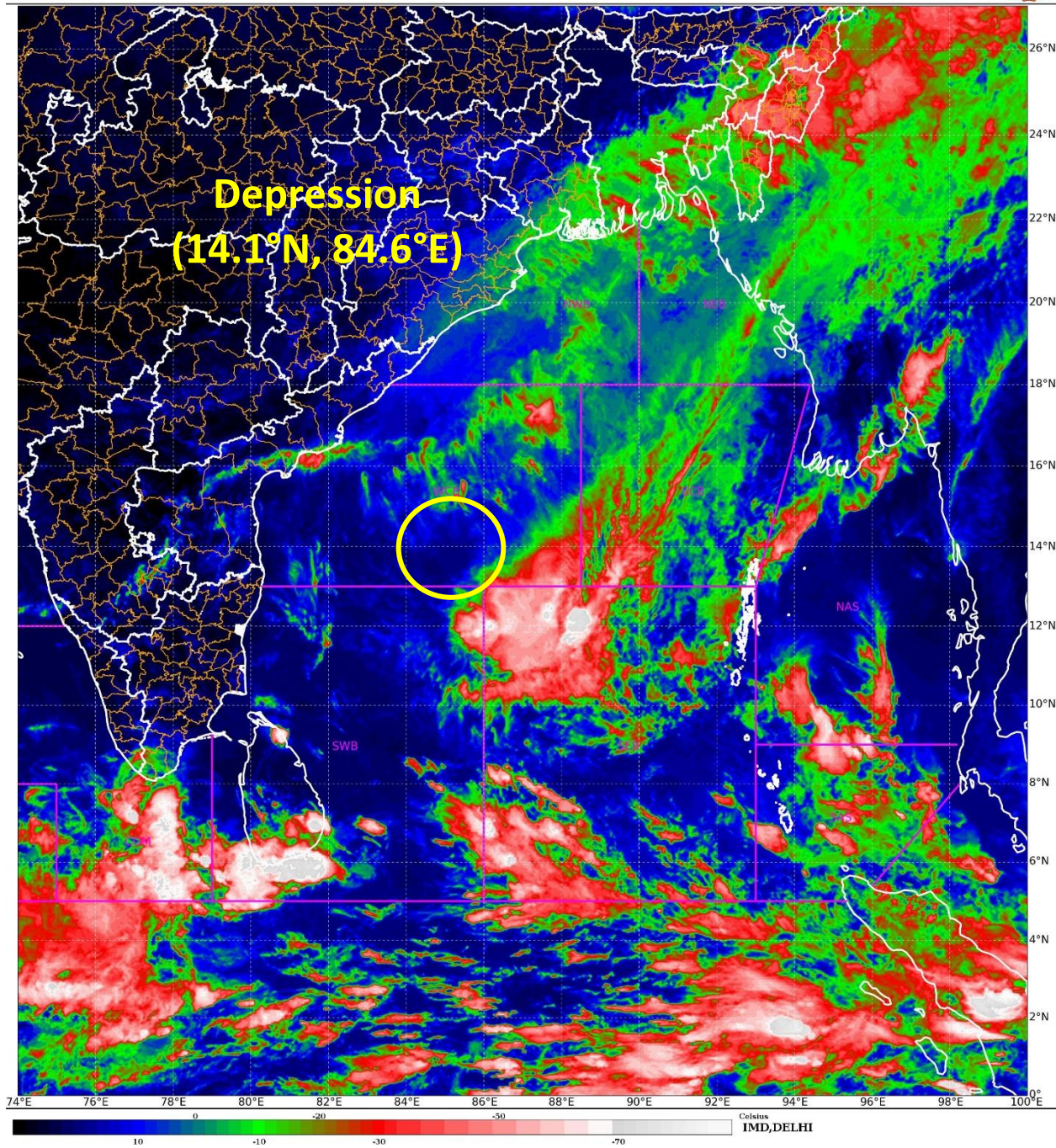
**(iv) Fishermen Warning:**

Fishermen are advised not to venture into westcentral & adjoining central parts of South Bay of Bengal till morning of 23<sup>rd</sup> December and along & off south Odisha-Andhra Pradesh-north Tamil Nadu coasts till on 21<sup>st</sup> & 22<sup>nd</sup> December.

**Next Bulletin will be issued on 2030 hrs IST of 21<sup>st</sup> December 2024.**

**(Dr Ananda Kumar Das)**  
**Scientist-F, RSMC, New Delhi**

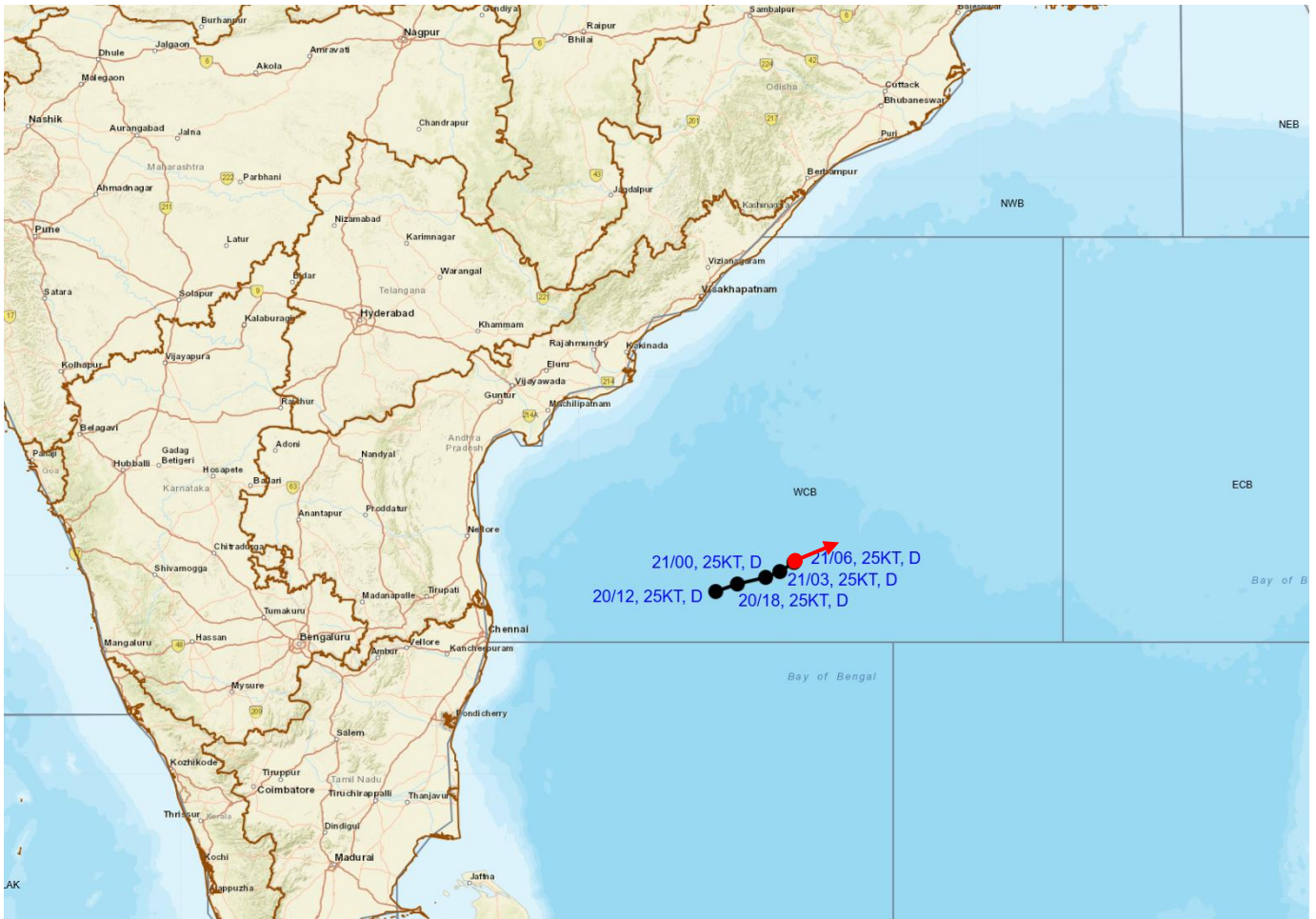
*Copy to: CRS, Pune/ACWC Chennai /ACWC Kolkata /CWC Vishakhapatnam/CWC  
Bhubaneswar/MC Amaravati/MC Port Blair*



**Spatial rainfall distribution: Isolated: <25%, A few: 26-50%, Many: 51-75%, Most: 76-100%**  
**Rainfall amount (mm): Heavy rain: 64.5 – 115.5, Very heavy rain: 115.6 – 204.4, Extremely heavy rain: 204.5 or more.**



## OBSERVED AND FORECAST TRACK OF DEPRESSION OVER WESTCENTRAL BAY OF BENGAL ON 0600 UTC (1130 HRS. IST) OF 21<sup>ST</sup> DECEMBER, 2024.

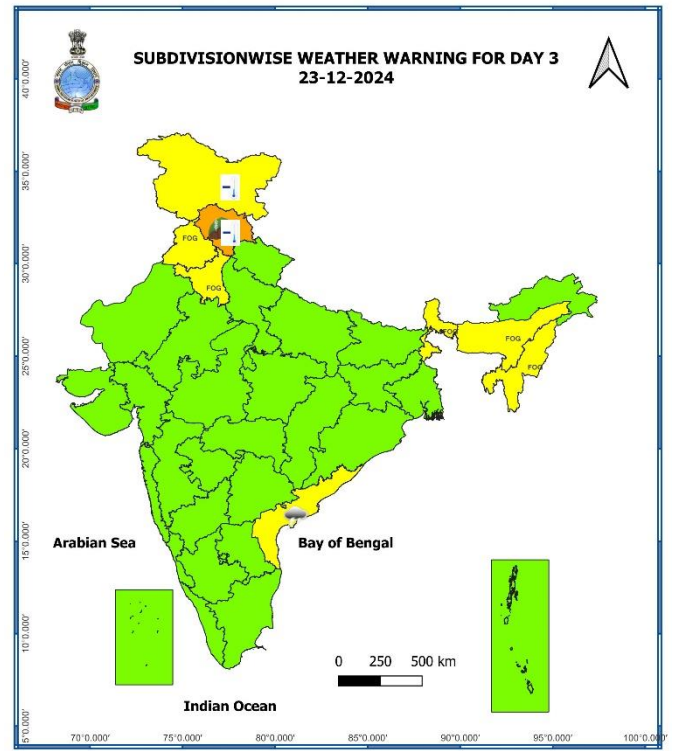
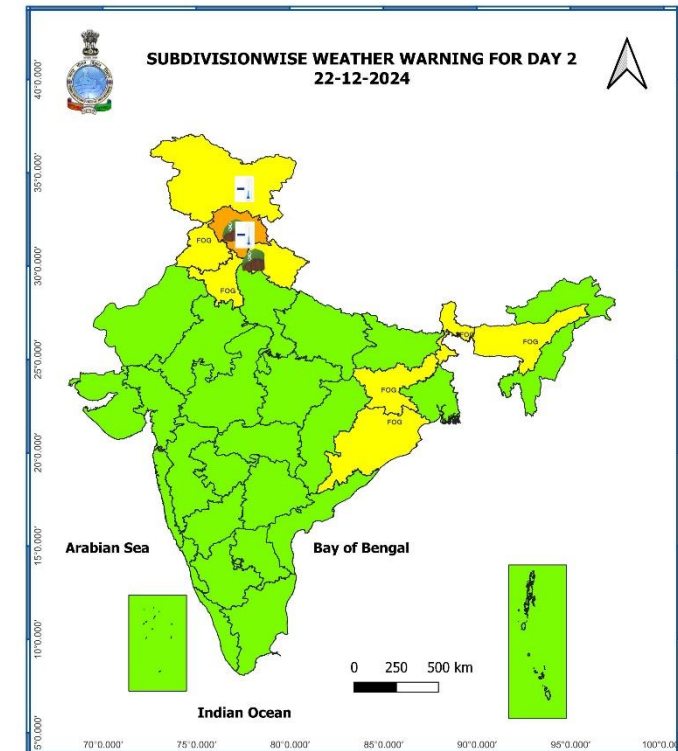
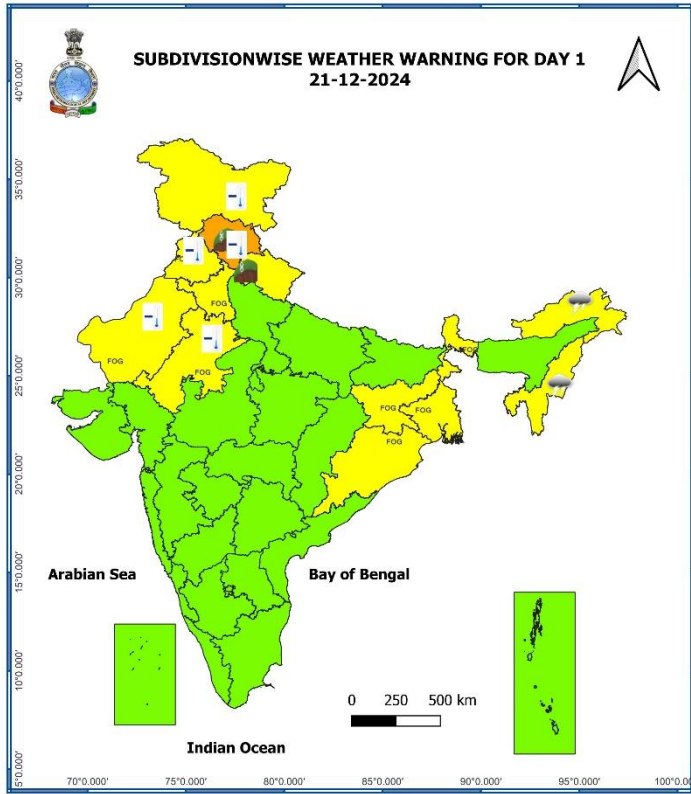


**DATE/TIME** : IN UTC  
**IST** : UTC + 0530  
**KT** : NAUTICAL MILE S/HOUR = 1.85 KM/HOUR  
**LPA** : LOW PRESSURE AREA  
**WML** : WELL MARKED LOW PRESSURE AREA  
**D** : DEPRESSION (17-27 KT)  
**DD** : DEEP DEPRESSION (28-33 KT)  
**CS** : CYCLONIC STORM (34-47 KT)  
**SCS** : SEVERE CYCLONIC STORM (48-63 KT)  
**VSCS** : VERY SEVERE CYCLONIC STORM (64-89 KT)  
**ESCS** : EXTREMELY SEVERE CYCLONIC STORM (90-119 KT)  
**SuCS** : SUPER CYCLONIC STORM ( $\geq 120$  KT)

LESS THAN 34 KT  
 34-47 KT  
 $\geq 48$  KT  
 OBSERVED TRACK  
 FORECAST TRACK  
 CONE OF UNCERTAINTY

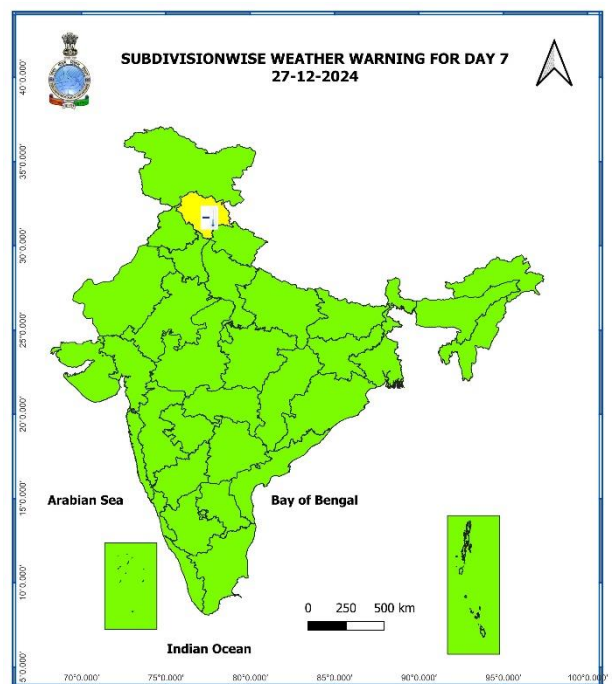
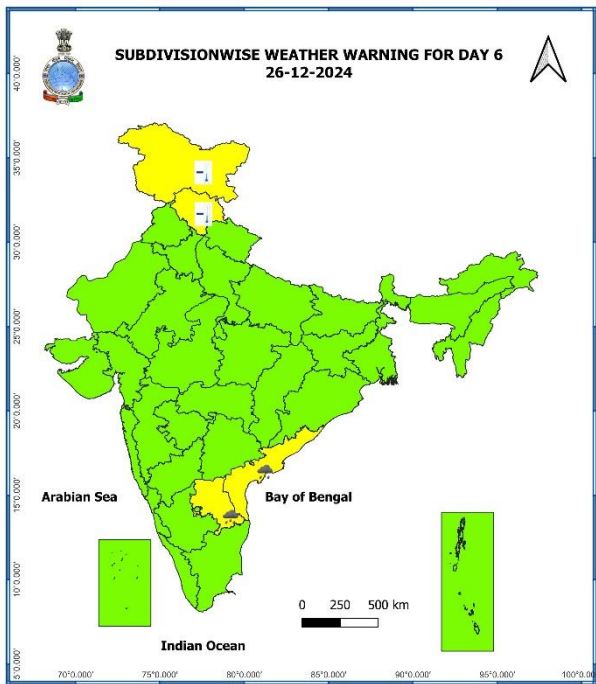
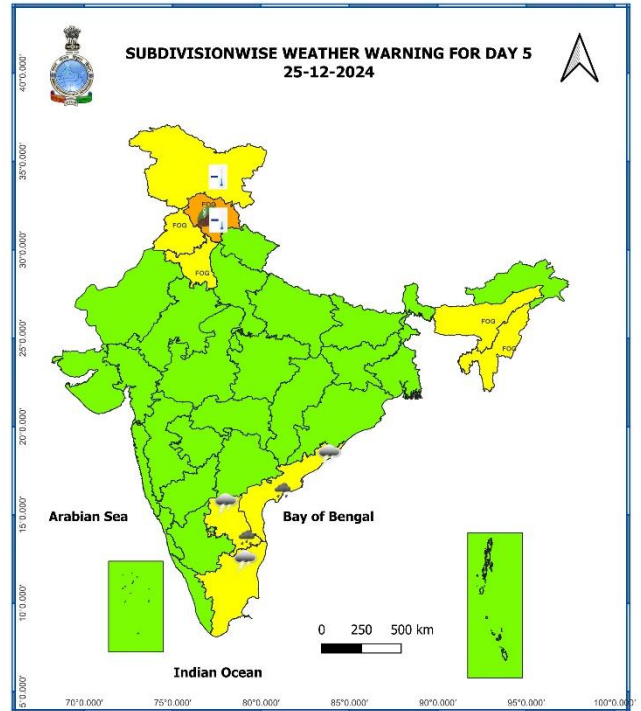
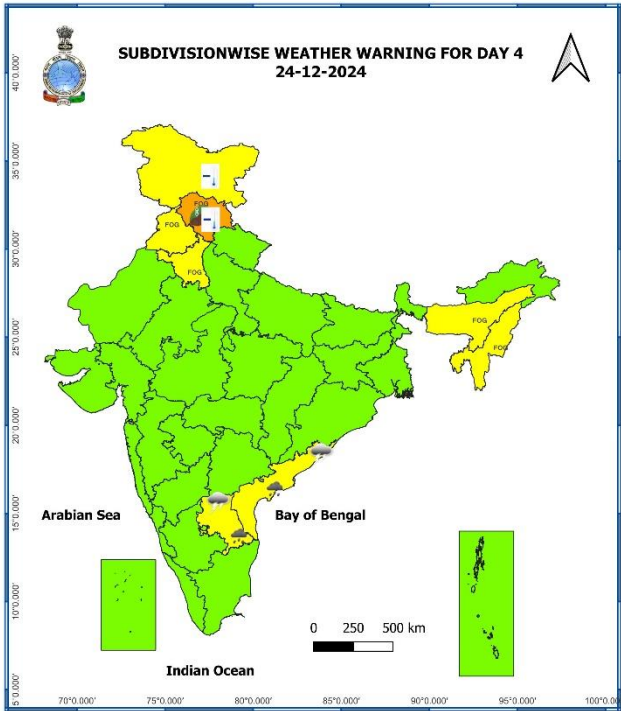
**Spatial rainfall distribution:** Isolated: <25%, A few: 26-50%, Many: 51-75%, Most: 76-100%  
**Rainfall amount (mm):** Heavy rain: 64.5 – 115.5, Very heavy rain: 115.6 – 204.4, Extremely heavy rain: 204.5 or more.

# Weather Warning Graphics



**Spatial rainfall distribution: Isolated: <25%, A few: 26-50%, Many: 51-75%, Most: 76-100%**  
**Rainfall amount (mm): Heavy rain: 64.5 – 115.5, Very heavy rain: 115.6 – 204.4, Extremely heavy rain: 204.5 or more.**

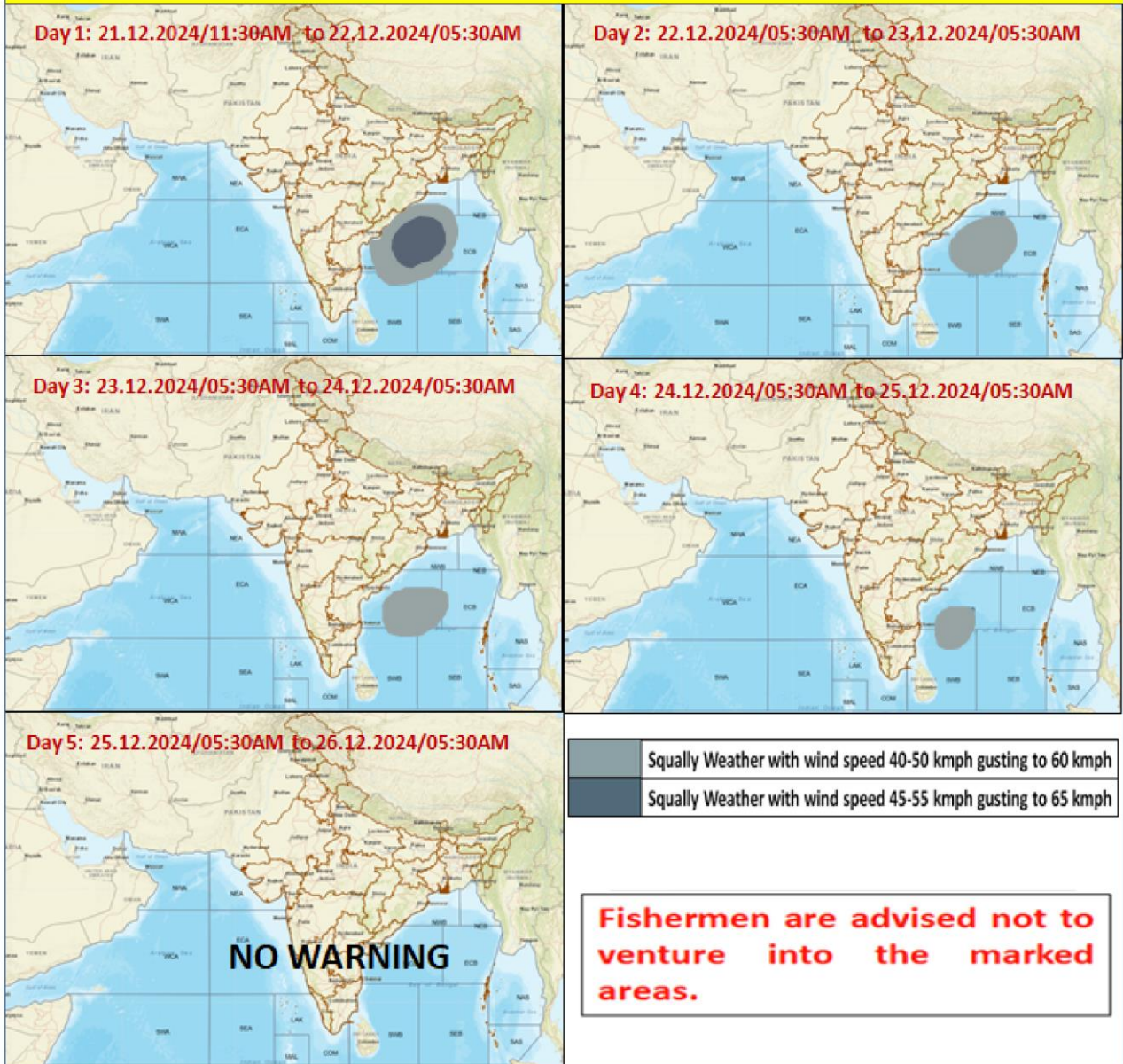
S



- Action may be taken based on **ORANGE AND RED COLOUR** warnings.
- Vulnerable regions likely urban and hilly areas action may be initiated for heavy rainfall warning.
- As the lead period increases forecast accuracy decreases

Spatial rainfall distribution: Isolated: <25%, A few: 26-50%, Many: 51-75%, Most: 76-100%  
Rainfall amount (mm): Heavy rain: 64.5 – 115.5, Very heavy rain: 115.6 – 204.4, Extremely heavy rain: 204.5 or more.

### Fishermen Warning Graphics



**Spatial rainfall distribution: Isolated: <25%, A few: 26-50%, Many: 51-75%, Most: 76-100%**

**Rainfall amount (mm): Heavy rain: 64.5 – 115.5, Very heavy rain: 115.6 – 204.4, Extremely heavy rain: 204.5 or more.**